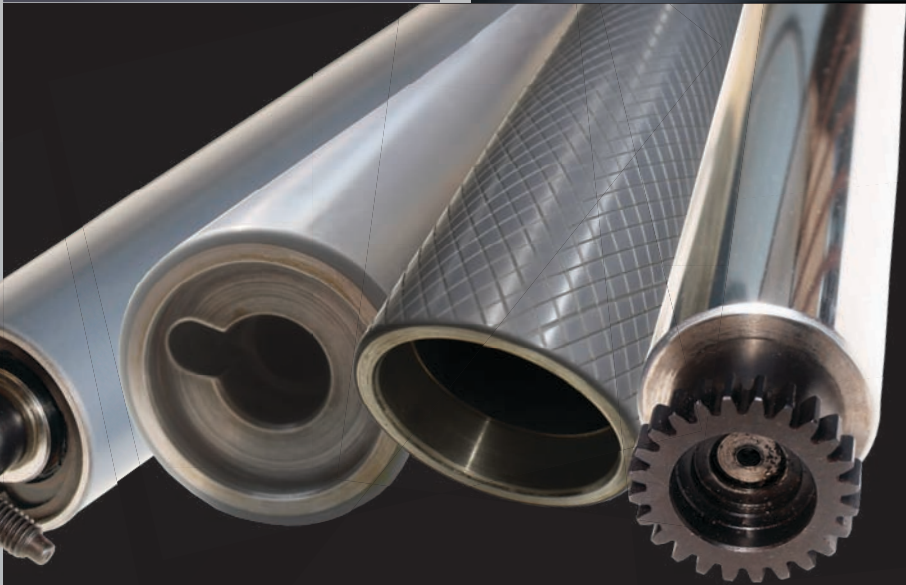


RETROFIT INDIA



RETROFIT INDIA



SPARES CATALOGUE
2022



RETROFIT INDIA

ABOUT US:

We started our company in Mumbai, India in the year 2000, with the goal of supplying best quality replacement parts at reasonable price to printing industry in India and abroad.

*We have highly motivated team of technical people, who do reverse engineering job for parts and assemblies, suitable for, **Heidelberg Roland, KBA, Komori** and many more sheet fed and web offset machines. Our strength and speciality is to produce critical part assemblies which have very close tolerances and require precision to produce them.*

We installed machine tools from Germany and Switzerland, to achieve high quality & close tolerance in production.

We cater to more than 500 print shops in India. We have expanded our business to USA, UK and Canada by supplying our parts to dealers in respective countries.

We specialize in producing hard rollers for inking and damping system of offset printing machines.

*Retrofit India has acquired exclusive license to produce 'Rilsan' coated ink distributor rollers for **Heidelberg, Roland, KBA** and all other printing machines. We have special purpose machines to manufacture Spiral and Diamond Grooved Rollers for Man Roland and KBA web offset machines. We produce super finish, matt and hard chrome rollers for water damping system.*

Since 5 years we have acquired technology to carry out damage cylinder repair jobs on site by electroplating process. We carried out more than 200 of such jobs in and around Mumbai.

Our goal is to expand our company to serve better and satisfy our customers!!

Innovation is our soul!!

Best Wishes,

Retrofit India Team





Rotary Valve Housing (Old)

**Product
No.: F 01**



Rotary Valve Housing (New)

**Product
No.: F 02**



Forwarding Sucker Piston

**Product
No.: F 03**



Rotary Valve

**Product
No.: F 04**



Forwarding Sucker Assly. (O.S.)

**Product
No.: F 05**



Forwarding Sucker Assly. (D.S.)

**Product
No.: F 06**



Sheet Separator Board

**Product
No.: F 07**



Sheet Separator Paper

**Product
No.: F 08**



Clip for lifting Sucker

**Product
No.: F 09**



Clip of Rotary Valve Housing

**Product
No.: F 10**



Press. Rubber Roller Assly. (O.S.)

**Product
No.: F 11**



Press. Rubber Roller Assly. (D.S.)

**Product
No.: F 12**



Press. Metal Roller Assly. (O.S.)

**Product
No.: F 13**



Press. Metal Roller Assly. (D.S.)

**Product
No.: F 14**



Press. Brush Roller Assly. for Paper (O.S.)

**Product
No.: F 15**



Press. Brush Roller Assly. for Paper (D.S.)

**Product
No.: F 16**



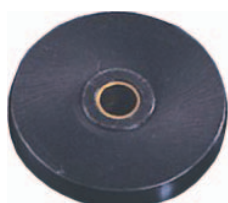
Press. Brush Roller Assly. for Board (O.S.)

**Product
No.: F 17**



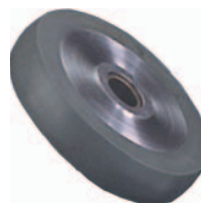
Press. Brush Roller Assly. for Board (D.S.)

**Product
No.: F 18**



Pressure Metal Runner

**Product
No.: F 19**



Pressure Rubber Roller

**Product
No.: F 20**



Pressure Soft Brush Roller

**Product
No.: F 21**



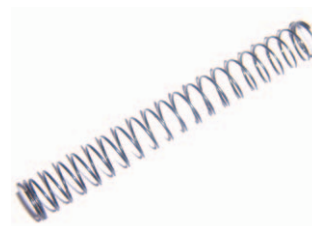
Pressure Hard Brush Roller

**Product
No.: F 22**



Lifting Sucker Spring

**Product
No.: F 31**



Air Blower Pipe Spring

**Product
No.: F 32**



Side Lay Paper Spring

**Product
No.: F 33**



Side Lay Board Spring

**Product
No.: F 34**



Swing Gripper Clamping Spring

**Product
No.: F 35**



Front Lay On-Off Big Spring
for 'S' offset

**Product
No.: F 36**



Front Lay On-Off Small Spring
for 'S' offset

**Product
No.: F 37**



Sheet Smoother Assy. (D.S.)

**Product
No.: F 38**



Sheet Smoother Assy. (O.S.)

**Product
No.: F 39**



Sheet Smoother Assy. - Big Board

**Product
No.: F 40**



Sheet Smoother Assy. - Big Paper

**Product
No.: F 41**



Sheet Smoother Assy. - Small Board

**Product
No.: F 42**



Sheet Smoother Assy. - Small Paper

**Product
No.: F 43**



Sheet Smoother Assy. - Medium Board

**Product
No.: F 44**



Sheet Smoother Assy. - Medium Paper

**Product
No.: F 45**



Sheet Smoother Assy. - Straight

**Product
No.: F 46**



Sheet Smoother Straight

**Product
No.: F 47**



Sheet Smoother (O.S.)

**Product
No.: F 48**



Sheet Smoother (D.S.)

**Product
No.: F 49**



Sheet Smoother Small Board

**Product
No.: F 50**



Sheet Smoother Small Paper

**Product
No.: F 51**



Sheet Smoother Medium Board

**Product
No.: F 52**



Sheet Smoother Medium Paper

**Product
No.: F 53**



Sheet Smoother Large Board

**Product
No.: F 54**



Sheet Smoother Large Paper

**Product
No.: F 55**



Front Lay for 'S' Offset

**Product
No.: F 56**



Front Lay for 'M' Offset

**Product
No.: F 57**



Front Lay for SORS/SORD/SM102V

**Product
No.: F 58**



Side Lay Block for 'M' Off (O.S.)

**Product
No.: F 59**



Side Lay Block for 'M' Off (D.S.)

**Product
No.: F 60**



Side Lay Block (D.S.) for 'S' & 'SM'

**Product
No.: F 61**



Side Lay Block (O.S.) for 'S' & 'SM'

**Product
No.: F 62**



Side Lay Brass Housing (D.S.)

**Product
No.: F 63**



Side Lay Brass Housing (O.S.)

**Product
No.: F 64**



Side Lay Block Center Bkt. (O.S.)

**Product
No.: F 65**



Side Lay Block Center Bkt. (D.S.)

**Product
No.: F 66**



Universal Joint (Feeder Side)

**Product
No.: F 67**



Universal Joint (Sprocket Side)

**Product
No.: F 68**



Pull Rail

**Product
No.: F 69**



C. D. Pull Rail

**Product
No.: F 70**



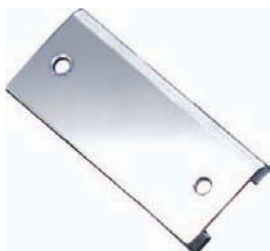
Lock for Side Lay Bearing (O.S.)

**Product
No.: F 71**



Lock for Side Lay Bearing (D.S.)

**Product
No.: F 72**



Side Lay Magnet

**Product
No.: F 73**



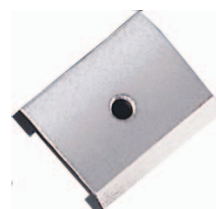
Side Lay Magnet (O.S.)

**Product
No.: F 74**



Side Lay Magnet (D.S.)

**Product
No.: F 75**



Side Lay Magnet - Half Cut

**Product
No.: F 76**



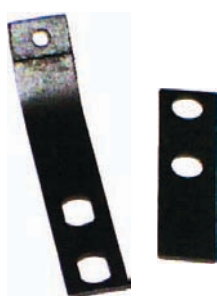
Front Lay Spring Pin for SORD & SORS

**Product
No.: F 77**



Front Lay Hook Spring Holder
for 'S' & 'SM'

**Product
No.: F 78**



Feed Gripper with Pressure Plate
for GTO & MO

**Product
No.: F 79**



Feeder Flange

**Product
No.: F 80**



Feeder Shaft

**Product
No.: F 81**



Swing Gripper

**Product
No.: F 82**



Swing Gripper Clamping Bolt

**Product
No.: F 83**



Sheet Stop for 'SM'

**Product
No.: F 84**



'M' Offset Feed Table

**Product
No.: F 85**



SORK Feed Table
Black Model

**Product
No.: F 86**



SORM Feed Table
Black Model

**Product
No.: F 87**



SORM Feed Table
Grey Model

**Product
No.: F 88**



SORD Feed Table
Grey Model

**Product
No.: F 89**



SORD Feed Table
Black Model

**Product
No.: F 90**



SORK Feed Table
Grey Model

**Product
No.: F 93**



Swing Gripper Pad Rail for 'M' Offset

**Product
No.: F 92**



Swing Gripper Pad Rail for SORD

**Product
No.: F 93**



Swing Gripper Pad Rail for SORK

**Product
No.: F 94**



Swing Gripper Pad Rail for SORS/102V

**Product
No.: F 95**



Swing Gripper Pad Rail for SORM/72V

**Product
No.: F 96**



GTO Rear Support Bracket

**Product
No.: F 97**



Press. Roller Rack Holder

**Product
No.: F 98**



Nylon Paper Weight

**Product
No.: F 99**



Forwarding Sucker Assly for C.D. (O.S.)

**Product
No.: F 100**



Forwarding Sucker Assly for C.D. (D.S.)

**Product
No.: F 101**



Forwarding Sucker Piston Assly for C.D.

**Product
No.: F 102**



Side Lay Spring Holder Bracket with
Paper Guide Plate & Spring Adjusting Screw O.S.

**Product
No.: F 103**



Side Lay Spring Holder Bracket with
Paper Guide Plate & Spring Adjusting Screw D.S.

**Product
No.: F 104**



XL105/CD 102 Forwarding Roller

**Product
No.: F 105**



SM 52 Forwarding Roller

**Product
No.: F 106**



SM/CD102 Format Roller

**Product
No.: F 107**



XL 75/CD74 Forwarding Roller for Feeder

**Product
No.: F 108**



XL75/XL105 Friction Wheel

**Product
No.: F 109**



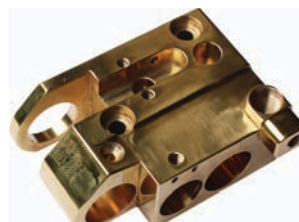
PM/QM46 Feed Roller Complete

**Product
No.: F 110**



Side Lay Housing preset CD 102 (O.S.)

**Product
No.: F 111**



Side Lay Housing preset CD 102 (D.S.)

**Product
No.: F 112**



SM 52 Sucker Unit

**Product
No.: F 113**



XL 75 Forwarding Sucker

**Product
No.: F 114**



SORM/SM72 Pneumatic Pad Rail (Cut)

**Product
No.: F 115**



SORS/SM102 Pneumatic Pad Rail (Cut)

**Product
No.: F 116**



SM 72 Feed Table

**Product
No.: F 117**



SM102/SORS Feed Table

**Product
No.: F 118**



SM102 Pull Rail

**Product
No.: F 119**



First Unit
17th Teeth

Upper O.S. with Spring
(Dampening Roller Bearing Housing for 'S' Offset)

**Product
No.: P 01**



First Unit
17th Teeth

Upper D.S. with Spring
(Dampening Roller Bearing Housing for 'S' Offset)

**Product
No.: P 02**



First Unit
4.5th Teeth

Lower O.S. with Spring
(Dampening Roller Bearing Housing for 'S' Offset)

**Product
No.: P 03**



First Unit
4.5th Teeth

Lower D.S. with Spring
(Dampening Roller Bearing Housing for 'S' Offset)

**Product
No.: P 04**



Second Unit
1st Teeth

Upper O.S. with Spring
(Dampening Roller Bearing Housing for 'S' Offset)

**Product
No.: P 05**



Second Unit
1st Teeth

Upper D.S. with Spring
(Dampening Roller Bearing Housing for 'S' Offset)

**Product
No.: P 06**



Second Unit
17th Teeth

Lower O.S. with Spring
(Dampening Roller Bearing Housing for 'S' Offset)

**Product
No.: P 07**



Second Unit
17th Teeth

Lower D.S. with Spring
(Dampening Roller Bearing Housing for 'S' Offset)

**Product
No.: P 08**



Second Unit
1st Teeth

Upper O.S. with Spring
(Dampening Roller Bearing Housing
for Speed Master 72V & 102V/z)

**Product
No.: P 09**



Second Unit
1st Teeth

Upper D.S. with Spring
(Dampening Roller Bearing Housing
for Speed Master 72V & 102V/z)

**Product
No.: P 10**



Lower O.S. without Spring
(Dampening Roller Bearing Housing
for Speed Master 72V & 102V/z)

**Product
No.: P 11**



Lower D.S. without Spring
(Dampening Roller Bearing Housing
for Speed Master 72V & 102V/z)

**Product
No.: P 12**



Adjusting Worm Gear for 'S' Offset - Tommy (O.S.)

**Product
No.: P 13**



Adjusting Worm Gear for 'S' Offset - Tommy (D.S.)

**Product
No.: P 14**



Adjusting Worm Gear for 'S' Offset - Hex (O.S.)

**Product
No.: P 15**



Adjusting Worm Gear for 'S' Offset - Hex (D.S.)

**Product
No.: P 16**



Adjusting Worm Gear for
'S' Offset - Screwdriver (O.S.)

**Product
No.: P 17**



Adjusting Worm Gear for
'S' Offset - Screwdriver (D.S.)

**Product
No.: P 18**



Adjusting Worm Gear for 'S' Offset - Hex

**Product
No.: P 19**



Adjusting Worm Gear for 'SM' - Tommy

**Product
No.: P 20**



Adjusting Worm Gear for 'SM' - Screwdriver

**Product
No.: P 21**



Adjusting Worm Gear for 'S' (Alcolour)

**Product
No.: P 22**



Adj. Spring Rod 'SM' Off Lower Side 102V & 72V

**Product
No.: P 23**



Adj. Spring Rod 'S' Off 2nd Unit Lower Side

**Product
No.: P 24**



Adj. Spring Rod 'S' Off 1st Unit Lower Side

**Product
No.: P 25**



Adj. Spring Rod 'S' Off 1st Unit Upper Side

**Product
No.: P 26**



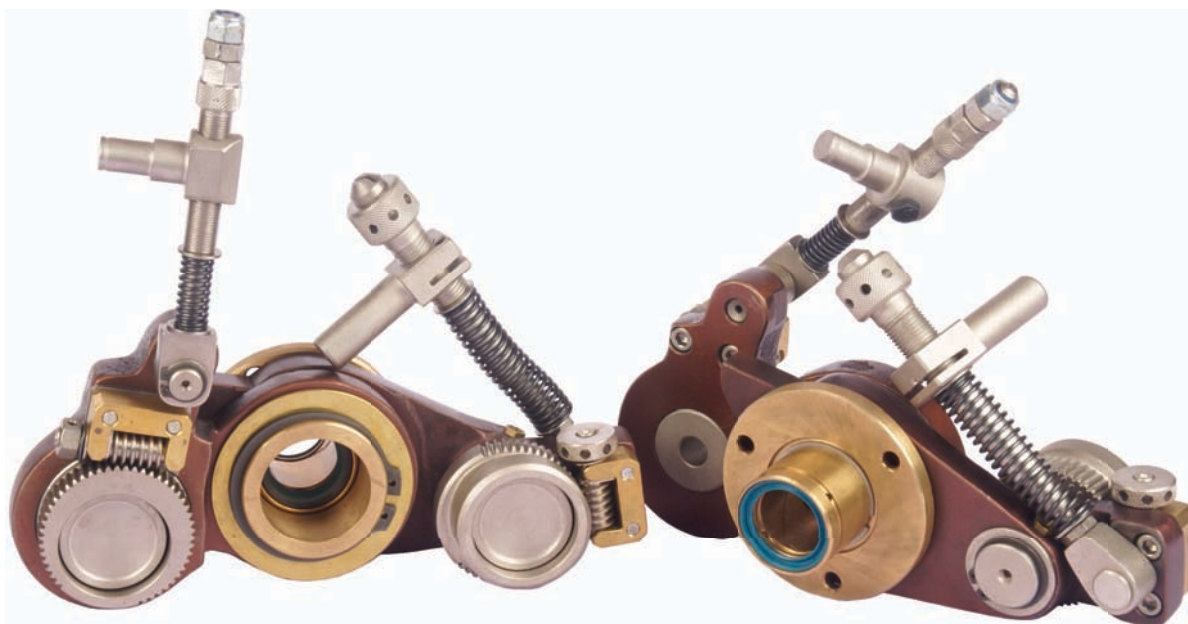
Adj. Spring Rod 'S' & 'SM' Off
& Pnumatic 2nd Unit Upper Side

**Product
No.: P 27**



Damp. Water Supply Bracket
Black Model (O.S.)

**Product
No.: P 28**



Damp. Bracket Assly. for SM 72V & 102V

**Product
No.: P 28**



Damp. Roller Assly. for 'S' Off 1st Unit

Product
No.: P 31



Damp. Bracket Assly. for 'S' Off 2nd Unit

Product
No.: P 32



GTO Dampening Roller Bracket Assy.

Product
No.: P 33



Damp. Bracket Assy. for 'M' Off (con.) O.S. & D. S.

Product
No.: P 34



Metering Gear
(ALCOLOUR GEAR SET FOR 'S' OFFSET)

**Product
No.: P 35**



S. S. Flange - Small
(ALCOLOUR GEAR SET FOR 'S' OFFSET)

**Product
No.: P 36**



S. S. Flange - Long
(ALCOLOUR GEAR SET FOR 'S' OFFSET)

**Product
No.: P 37**



S. S. Half Cut Cup
(ALCOLOUR GEAR SET FOR 'S' OFFSET)

**Product
No.: P 38**



S. S. Gear Half Cut
(ALCOLOUR GEAR SET FOR 'S' OFFSET)

**Product
No.: P 39**



Spur Gear - Big
(ALCOLOUR GEAR SET FOR 'S' OFFSET)

**Product
No.: P 40**



Spur Gear - Small
(ALCOLOUR GEAR SET FOR 'S' OFFSET)

**Product
No.: P 41**



Washer
(ALCOLOUR GEAR SET FOR 'S' OFFSET)

**Product
No.: P 42**



Alcolour Long Gear
(ALCOLOUR GEAR SET FOR 'S' OFFSET)

**Product
No.: P 43**



Alcolour Intermediate Roller Pin for 'S' Off

**Product
No.: P 44**



Damp. Water Supply Bracket
Grey Model (O.S.)

**Product
No.: P 45**



Spur Gear Pin for 102V Big

**Product
No.: P 46**



Spur Gear Pin for SM 74

**Product
No.: P 47**



Gear Pin for 'S' & 'SM'

**Product
No.: P 48**



Alcolour Long Gear
(ALCOLOUR GEAR SET FOR 'M' OFFSET)

**Product
No.: P 49**



S.S. Flange - Small

**Product
No.: P 50**



S.S. Flange - Big
(ALCOLOUR GEAR SET FOR 'M' OFFSET)

**Product
No.: P 51**



S.S. Long Cup
(ALCOLOUR SET FOR 'M' OFFSET)

**Product
No.: P 52**



Spur Gear - Small (Teeth - 19)
(ALCOLOUR GEAR SET FOR 'M' OFFSET)

**Product
No.: P 53**



Spur Gear - Big (Teeth - 21)
(ALCOLOUR GEAR SET FOR 'M' OFFSET)

**Product
No.: P 54**



Intermediate Roller Clamping
Stud Assly. for 'M' Off

**Product
No.: P 55**



Intermediate Roller Clamping
Stud Assly. for 'S' & 'SM'

**Product
No.: P 56**



Inking Spacer 'S' & 'SM'

**Product
No.: P 57**



Dampening Spacer 'S' & 'SM'

**Product
No.: P 58**



Dampening Spacer Thin 'S' & 'SM'

**Product
No.: P 59**



Blanket Claw for SM-74

**Product
No.: P 60**



Blanket Claw for CD Machine

**Product
No.: P 53**



Blanket Claw for 'M' Offset (Old)

**Product
No.: P 60**



Blanket Claw Clip for 'M' offset

**Product
No.: P 61**



Blanket Claw for 'M' Off (New)

**Product
No.: P 62**



GTO Duct Clutch

**Product
No.: P 65**



MO Duct Clutch

**Product
No.: P 64**



'S' Off Duct Clutch

**Product
No.: P 67**



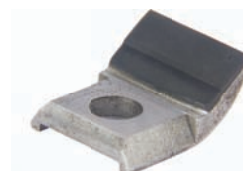
Ratchet Assy. for 'S' Offset

**Product
No.: P 68**



Alcolour Intermediate Roller
Cam Assy. for 'M' Offset

**Product
No.: P 69**



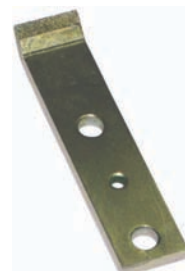
Gripper Tip for 'M' Offset (PU)

**Product
No.: P 70**



Impression & Transfer Gripper for 'S' & 'SM' (PU)

**Product
No.: P 71**



Imp & transfer Gripper for S & SM (Metal)

**Product
No.: P 70**



Black Model Gripper PU

**Product
No.: P 73**



Gripper Holder Assy. with
Clamping Piece for 'M' Offset

**Product
No.: P 75**



Perfecting Gripper Upper for 102V

**Product
No.: P 76**



Perfecting Gripper Lower for 102V

**Product
No.: P 77**



Imp. Gripper Setting Bolt for 'S' & 'SM'

**Product
No.: P 78**



Impression Trf. Gripper Tension
Setting Screw 'S' & 'SM'

**Product
No.: P 79**



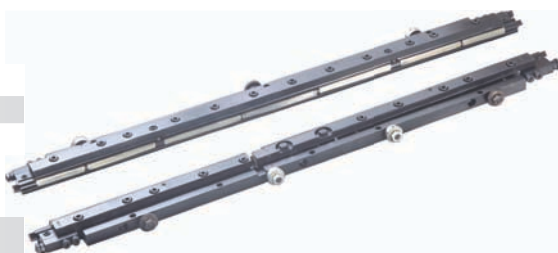
Roland 200 Gripper Tip

**Product
No.: P 80**



Roland 200 Gripper Pad

**Product
No.: P 81**



Quick action plate clamp for SORM

**Product
No.: P 82**



Quick action plate clamp for SORD

**Product
No.: P 83**



Quick Action Plate Clamp for 'M' Off

**Product
No.: P 84**



Quick Action Plate Clamp for 102V

**Product
No.: P 85**

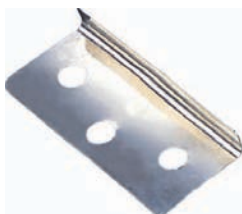


Plate Spring - 80 mm (For QA Plate Clamps)

**Product
No.: P 86**



Plate Spring - 115 mm
(For QA Plate Clamps)

**Product
No.: P 87**

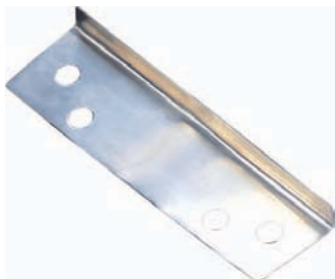


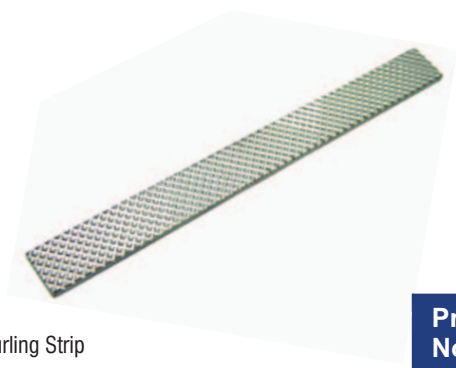
Plate Spring - 135 mm
(For QA Plate Clamps)

**Product
No.: P 88**



Plate Spring - 135 mm Cut
(For QA Plate Clamps)

**Product
No.: P 89**



Knurling Strip

**Product
No.: P 90**



Cam Rod for 'M' Off

**Product
No.: P 91**



Cam rod for SORD

**Product
No.: P 92**



Cam Rod for SORM

**Product
No.: P 93**



Blanket clamp set for M offset

**Product
No.: P 94**



Blanket clamp set for SORK

**Product
No.: P 95**



Blanket clamp set for SORM

**Product
No.: P 96**



Blanket clamp set for SORD

**Product
No.: P 97**



Blanket clamp set for SORS

**Product
No.: P 98**



Blanket clamp set for 72V

**Product
No.: P 99**



Blanket clamp set for 102V

**Product
No.: P 100**



Blanket clamp set for GTO 52

**Product
No.: P 101**



Ink duct blade for SORD

**Product
No.: P 102**



Ink duct blade for M offset

**Product
No.: P 103**



Ink duct blade for SORK

**Product
No.: P 104**



Ink duct blade for SORM / SM72

**Product
No.: P 105**



Ink duct blade for GTO 46

**Product
No.: P 106**



Ink duct blade for KORD

**Product
No.: P 107**



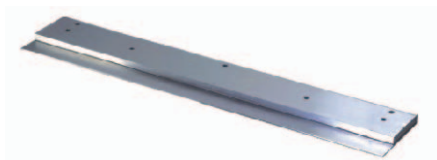
Ink duct blade for SM 102

**Product
No.: P 108**



Ink duct blade for SORM (pneumatic)

**Product
No.: P 109**



Ink duct blade for GTO 52

**Product
No.: P 110**



Blanket Clamping Worm Wheel Assy.
for 'S' & 'SM'

**Product
No.: P 111**



Blanket Clamping Worm Wheel Assy.
for 'M' Offset

**Product
No.: P 112**



Blanket Clamping Worm &
Worm Wheel for Sm74

**Product
No.: P 113**



Imp. On-Off Spring for 72V

**Product
No.: P 114**



Cylinder Stud 'S' Off

**Product
No.: P 115**



Cylinder Stud 'M' Off

**Product
No.: P 116**



Conventional Dampening
Pan Roller Socket

**Product
No.: P 117**



Perforating Axial Bracket

**Product
No.: P 118**



Ink Cleaning Device Tightening
Studs for 'M' Offset

**Product
No.: P 119**



Alcolour 72V Follower

**Product
No.: P 128**



Alcolour 72V Cam

**Product
No.: P 129**



MO Damp. Flat Bush - Dia 36 (O.S.)

**Product
No.: P 130**



MO Damp. Step Bush - Dia 36 (D.S.)

**Product
No.: P 131**



MO Damp. Flat Bush - Dia 42 (O.S.)

**Product
No.: P 132**



MO Damp. Step Bush - Dia 42 (D.S.)

**Product
No.: P 133**



Damp. Brass Bush Assly.

**Product
No.: P 134**



Alcolour Stud for 'S' & 'SM'

**Product
No.: P 135**



Dampening Locking Pin for 'M' Offset

**Product
No.: P 146**



Transfer Gripper Shaft for 'M' Off

**Product
No.: P 147**



Impression Gripper Shaft for 'M' Off

**Product
No.: P 148**



Ink Roller On-Off Lock for 'M'

**Product
No.: P 149**



Modified Plate Clamp for 'M' Off

**Product
No.: P 150**



Impression Gripper Pad (Diamond)

**Product
No.: P 152**



CD 102 Long Gear

**Product
No.: P 153**



SM 74 Long Gear

**Product
No.: P 154**



SM 52 Long Gear

**Product
No.: P 155**



CD 74-XL 75 Long Gear

**Product
No.: P 156**



Ink Roller Bearing Housing CD 102

**Product
No.: P 157**



Ink Roller Bearing Housing SM 72-102

**Product
No.: P 158**



PM 46 Perforator Holder

**Product
No.: P 159**



Blanket Cylinder Pin

**Product
No.: P 160**



Blanket Clamping Worm Wheel Assly. CD

**Product
No.: P 161**



Damp. Water Supply Bracket SM (O.S.)

**Product
No.: P 162**



Adjusting Worm Gear for CD-Screwdriver

**Product
No.: P 163**



Ink Cleaning Device
Tightening Studs for GTO 46-52

**Product
No.: P 164**



CD Imp. Transfer Gripper

**Product
No.: P 165**



Impression & Transfer Gripper for CD 74 (Metal)

**Product
No.: P 166**



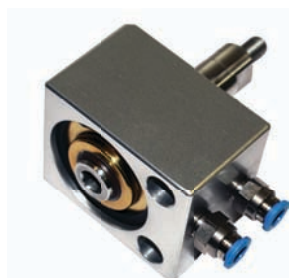
Impression & Transfer Gripper for SM 74 (PU)

**Product
No.: P 167**



Blanket Wash Cylinder for SM-CD 102 (D.S.)

**Product
No.: P 168**



Blanker Wash Cylinder for SM-CD 102 (O.S.)

**Product
No.: P 169**



SM-52 Ink Roller, CD-102 Dampening

**Product
No.: P 170**



Dampening Pneumatic On-Off
Cylinder for 'M' Offset 25mm Stroke

**Product
No.: P 171**



Impression On-Off &
Ink Vibrator Cylinder 'S' Off - 20mm Stroke

**Product
No.: P 172**



Intermediate Roller On-Off Cylinder
'SM' - 15mm Stroke

**Product
No.: P 173**



SM-72, SM-102 Frontlay

**Product
No.: P 174**



Guide Strap for 'S' & 'SM'

**Product
No.: D 01**



Front Stops for 'S' Offset

**Product
No.: D 02**



Delivery Gripper for 'M' Offset

**Product
No.: D 03**



Delivery Gripper Bar Spring Right for 'M' Offset

**Product
No.: D 04**



Delivery Gripper Bar Spring Left for 'M' Offset

**Product
No.: D 05**



Jogger Rod (Complete) for 'M' Offset (D.S.)

**Product
No.: D 06**



Jogger Rod (Complete) for 'M' Offset (O.S.)

**Product
No.: D 07**



Jogger Rod (Complete) for 'S' Offset (O.S.)

**Product
No.: D 08**



Jogger Rod (Complete) for 'S' Offset (D.S.)

**Product
No.: D 09**



Jogger Rod Sleeve for 'M' Offset (O.S.)

**Product
No.: D 10**



Jogger Rod Sleeve for 'M' Offset (D.S.)

**Product
No.: D 11**



Jogger Rod Sleeve for 'S'

**Product
No.: D 12**



Jogger Rod Sleeve for 'SM' (Same size bearing)

**Product
No.: D 13**



Jogger Rod - Large

**Product
No.: D 14**



Jogger Rod - Medium

**Product
No.: D 15**



Jogger Rod - Small

**Product
No.: D 16**



Gripper Pads Aluminium for 'SM'

**Product
No.: D 17**



Gripper Pads Nylon for 'SM'

**Product
No.: D 18**



Gripper Pads for 'S' Offset

**Product
No.: D 19**



Stopper for Air Blower

**Product
No.: D 20**



Paper Star Supporting Wheels

**Product
No.: D 21**



Paper Plain Supporting Wheels

**Product
No.: D 22**



Sheet Brake Assly. Nylon Pulley for 'S' Offset

**Product
No.: D 23**



Nylon Pulley

**Product
No.: D 24**



b) Metal Pulley

**Product
No.: D 25**



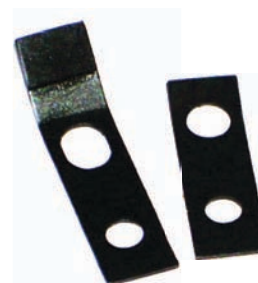
Sheet Brake Assly. for 'SM'

**Product
No.: D 26**



Sheet Brake Motor Gear for 'SM'

**Product
No.: D 27**



KORD Gripper with Pressure Plate

**Product
No.: D 28**



Q.M.- 46 Delivery Gripper Bar Assly.

**Product
No.: D 29**



GTO 46 - Delivery Gripper Bar Assly.

**Product
No.: D 30**



GTO 52 - Delivery Gripper Bar Assly.

**Product
No.: D 31**



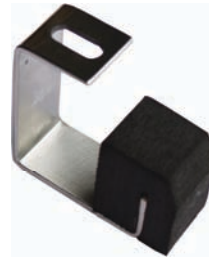
SM 74 - Delivery Gripper Bar Assly.

**Product
No.: D 32**



SM 52 Sheet Stopper

**Product
No.: D 33**



CD 74 Sheet Stopper

**Product
No.: D 34**



SM 74 Jogger Finger

**Product
No.: D 35**



Wrench for Distributor Cylinder 'S' & 'SM'

**Product
No.: A 04**



Pressure Adjusting Spanner - Long 'S' & 'SM'

**Product
No.: A 05**



Pressure Adjusting Spanner - Short 'S' & 'SM'

**Product
No.: A 06**



Metal Tommy - Bend

**Product
No.: A 07**



Metal Tommy - Straight

**Product
No.: A 08**



Box Spanner - 19mm (Blanket Cylinder Spanner)

**Product
No.: A 09**



Box Spanner - 17mm (Long)

**Product
No.: A 10**



Box Spanner - 17mm (Small)

**Product
No.: A 11**



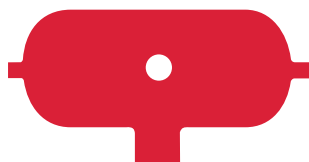
Box Spanner - 10mm

**Product
No.: A 12**



Wrench for Quick Action Clamp of 102V

**Product
No.: A 13**



Sheet Brake Vacuum Adjusting Key for 'S' Offset

**Product
No.: A 14**



CPC Magnet

**Product
No.: A 15**



Blanket Gauge (With Three Dial Indicators)

**Product
No.: A 16**



Dampening Motor Cover

**Product
No.: A 17**



Box Spanner - 13mm

**Product
No.: A 18**



Hicky Remover Rubber

**Product
No.: A 19**



Kaiser Compressor Connecting Rod

**Product
No.: A 20**



Electrical Panel Key

**Product
No.: A 21**



S 10 Spanner for QA Clamps

**Product
No.: A 22**



S 11 Spanner for GTO QA Clamps

**Product
No.: A 23**



Feeler Gauge

**Product
No.: A 24**



GTO Pile Handle

**Product
No.: A 25**



Pedal for Polar Cutting Machine

**Product
No.: A 26**



Safety Bolt for Polar Paper Cutting Machine - 115

**Product
No.: A 27**



Grease Pump for 'M' Off & GT0

**Product
No.: A 28**



Safety Bolt For Polar 76-78 Paper Cutting machine

**Product
No.: A 29**



GTO 46 Ink Distributor Roller (Dia 60 x 455 mm)

**Product
No.: R 01**



GTO 46 Ink Distributor Roller (Dia 60 x 466 mm)

**Product
No.: R 02**



GTO 52 Ink Distributor Roller (Dia 60 x 516 mm)

**Product
No.: R 03**



GTO 52 Ink Distributor Roller (Dia 60 x 527 mm)

**Product
No.: R 04**



MO Offset Ink Distributor Roller
(Dia 66 x 654 mm)

**Product
No.: R 05**



MO Offset Ink Distributor Roller
(Dia 66 x 674 mm)

**Product
No.: R 06**



SORK Ink Distributor Roller (Dia 85.1 x 675 mm)

**Product
No.: R 07**



SORM Ink Distributor Roller (Dia 85.1 x 745 mm)

**Product
No.: R 08**



SM 72 Ink Distributor Roller (Dia 85.1 x 760 mm)

**Product
No.: R 09**



SM 74 Ink Distributor Roller (Dia 71 x 780 mm)

**Product
No.: R 10**



SORD Ink Distributor Roller (Dia 85.1 x 915 mm)

**Product
No.: R 11**



SORD Pneumatic Ink Distributor Roller
(Dia 85.1 x 930 mm)

**Product
No.: R 12**



SOR Ink Distributor Roller (Dia 85.1 x 845 mm)

**Product
No.: R 13**



SORS Ink Distributor Roller (Dia 85.1 x 1045 mm)

**Product
No.: R 14**



SM 102 Ink Distributor Roller
(Dia 85.1 x 1060 mm)

**Product
No.: R 15**



Removable (Key way) Distributor Roller
SORK (Dia 85.1 x 675 mm)

**Product
No.: R 21**



Removable (Key way) Distributor Roller
SORM (Dia 85.1 x 745 mm)

**Product
No.: R 22**



Removable (Key way) Distributor Roller
SOR (Dia 85.1 x 845 mm)

**Product
No.: R 23**



Removable (Key way) Distributor Roller
SORD (Dia 85.1 x 915 mm)

**Product
No.: R 24**



Removable (Key way) Distributor Roller
SORD PNEU (Dia 85.1 x 930 mm)

**Product
No.: R 25**



Removable (Key way) Distributor Roller
SORS (Dia 85.1 x 1045 mm)

**Product
No.: R 26**



Int. Oscillation Roller GT0 52 (Dia 45 x 518 mm)

**Product
No.: R 31**



Int. Oscillation Roller SM 52 (Dia 46 x 531 mm)

**Product
No.: R 32**



Int. Oscillation Roller MO (Dia 45 x 658 mm)

**Product
No.: R 33**



Int. Oscillation Roller SM 74 (Dia 45 x 750 mm)

**Product
No.: R 34**



Int. Oscillation Roller CD 74 (Dia 45 x 750 mm)

**Product
No.: R 35**



Int. Oscillation Roller SM 72 (Dia 56 x 733 mm)

**Product
No.: R 36**



Int. Oscillation Roller SM 102 (Dia 56 x 1033 mm)

**Product
No.: R 37**



Matt Chrome Distributor Roller
GTO 52 (Dia 44 x 523 mm)

**Product
No.: R 41**



Matt Chrome Distributor Roller
MO (Dia 44 x 664 mm)

**Product
No.: R 42**



Matt Chrome Distributor Roller
SM 74 (Dia 53.85 x 761 mm)

**Product
No.: R 43**



Matt Chrome Distributor Roller
SORM-SM 72 (Dia 85.1 x 755 mm)

**Product
No.: R 44**



Matt Chrome Distributor Roller
SORD (Dia 85.1 x 925 mm)

**Product
No.: R 45**



Matt Chrome Distributor Roller
SORS-SM 102 (Dia 85.1 x 1055 mm)

**Product
No.: R 46**



Super Finish Metering Roller
GTO 52 (Dia 58 x 530 mm)

**Product
No.: R 51**



Super Finish Metering Roller
SM 52 (Dia 63.75 x 550 mm)

**Product
No.: R 52**



Super Finish Metering Roller
MO (Dia 64 x 673 mm)

**Product
No.: R 53**



Super Finish Metering Roller
SM 74 (Dia 64 x 767 mm)

**Product
No.: R 54**



Super Finish Metering Roller
CD 74 (Dia 74 x 793 mm)

**Product
No.: R 55**



Super Finish Metering Roller
SM 72 (Dia 98 x 760 mm)

**Product
No.: R 56**



Super Finish Metering Roller
SM 102 (Dia 98 x 1060 mm)

**Product
No.: R 57**



Super Finish Pan Roller KOMORI
(Dia 68 x 736 mm)

**Product
No.: R 61**



Super Finish Pan Roller KOMORI
(Dia 68 x 796 mm)

**Product
No.: R 62**



Super Finish Pan Roller KOMORI 40
(Dia 82.6 x 1112 mm)

**Product
No.: R 63**



Super Finish Pan Roller KOMORI 44
(Dia 82.6 x 1212 mm)

**Product
No.: R 64**



Super Finish Metering Roller KBA
(Dia 60 x 760 mm)

**Product
No.: R 71**



Super Finish Metering Roller KBA 104
(Dia 110 x 1095 mm)

**Product
No.: R 72**



Stainless Steel Water Cooled Roller SM 52
(Dia 62.5 x 560 mm)

**Product
No.: R 81**



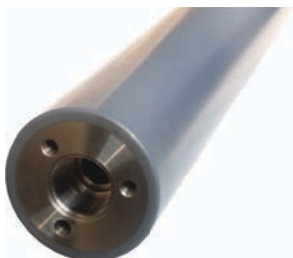
Stainless Steel Water Cooled Roller CD 74
(Dia 71 x 780 mm)

**Product
No.: R 82**



Stainless Steel Water Cooled Roller CD 102
(Dia 85.1 x 1060 mm)

**Product
No.: R 83**



Stainless Steel Water Cooled Roller XL 105
(Dia 81.4 x 1086 mm)

**Product
No.: R 84**



Diamond Grooved Roller Web Offset

**Product
No.: R 91**



Spiral Grooved Rilsan Roller KBA Colora
(Dia 155 x 840 mm)

**Product
No.: R 92**



Spiral Grooved Rilsan Roller KBA Prisma
(Dia 155 x 1454 mm)

**Product
No.: R 93**



Rider Roller SM 72 (Dia 68 x 733 mm)

**Product
No.: R 101**



Rider Roller SM 72 (Dia 56 x 733 mm)

**Product
No.: R 102**



Rider Roller SM 72 (Dia 56 x 733 mm)

**Product
No.: R 103**



Rider Roller SM 102 (Dia 68 x 1033 mm)

**Product
No.: R 104**



Rider Roller SM 102 (Dia 56 x 1033 mm)

**Product
No.: R 105**



Rider Roller SM 102 (Dia 56 x 1033 mm)

**Product
No.: R 106**



Ink Distributor Roller Flange for S Offset O.S.
(L-155 mm)

**Product
No.: RF 01**



Ink Distributor Roller Flange for SM 72-102 O.S.
(L-141 mm)

**Product
No.: RF 02**



Ink Distributor Roller Flange 1st Unit D.S.
(L-171.5 mm)

**Product
No.: RF 03**



Ink Distributor Roller Flange 1st Unit O.S.
(L-248 mm)

**Product
No.: RF 04**



Ink Distributor Roller Flange S-SM (D.S.)

**Product
No.: RF 05**



Ink Distributor Key Way Roller Flange O.S.

**Product
No.: RF 06**



Ink Distributor Key Way Roller Flange D.S.

**Product
No.: RF 07**



Water Distributor Roller Flange D.S.

**Product
No.: RF 08**



What can we do for you?

Retrofit India, Printing Cylinder Repairs endeavours to provide you with a special on-site service, available to your business 24 hours a day, 7 days a week. This enables us to monitor your machinery around the clock 365 days of the year. We provide each client with a specialised team of highly qualified engineers, who can tailor your individual requirements to cover a wide range of complex requests for repairs.

The repairs undertaken are extensive and include low areas due to sheet jams, Allen key damage (nuts, bolts) and most common of all the break-up of damper bearings. All work undertaken is given a lifetime guarantee to the print quality of the repairs! **Retrofit India** also carries out on-site welding of cylinders e.g. pieces broken from the main body of a cylinder can be welded back, ground down and electroplated back to size. This repair is then cosmetically finished to get brand new appearance.

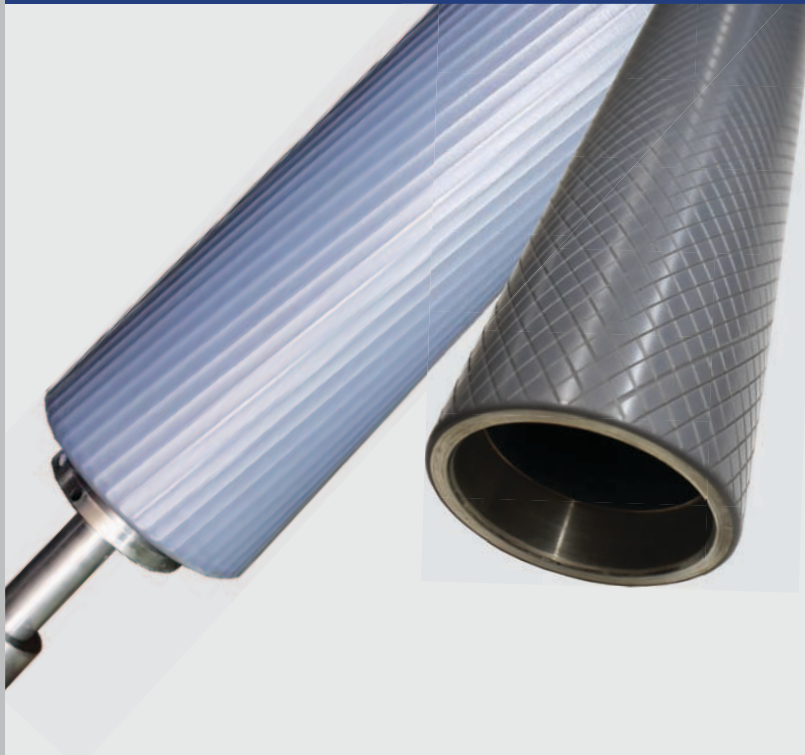
Whatever the nature of the repair, **Retrofit India** Printing Cylinder Repairs have skilled staff and are able to offer reliable and cost effective solutions to all of our customer's needs.

For more information about our printing cylinder repair services please call Kishor on +91 9820136283 or Joshi on +91 9820222601.





RETROFIT INDIA



Works : 21, Ganesh Ind. Estate,
Near Virvani, Off. Aarey Road,
Goregaon (E), Mumbai - 400 063.
Tel.: +91 - 22 - 2927 1031 / 1032
Email : mail@retrofitindia.com
retrofitindia@gmail.com
Website : www.retrofitindia.com

Sales Office : 306, Bussa Industrial Estate,
Shankarrao Naram Path,
Lower Parel (W), Mumbai - 400 013.
Tel. : +91-22-2492 3515 / 4005 9464.
Cell : +91 9820222601
Email : riteparts@gmail.com